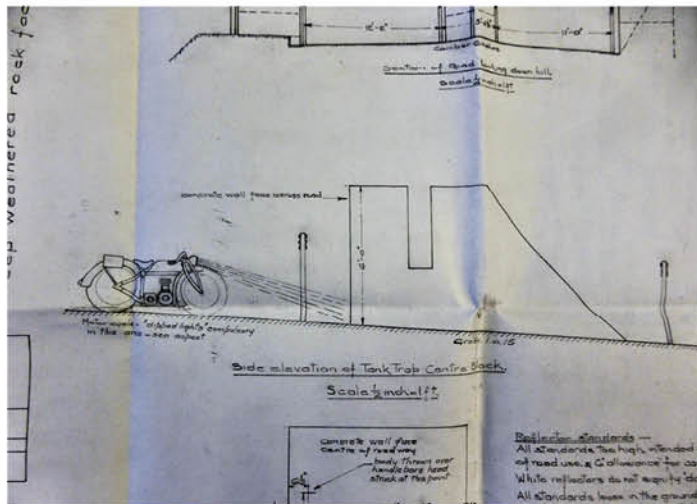


Second World War Road Block



Drawing of Pukerua Bay road block made by Albert Collin the day after the accident. Archives Reference: ACGS 16231 COR1942/989. Archives New Zealand, Department of Internal Affairs, Te Tari Taiwhenua.



Part of plan drawn by Albert Collin. Archives Reference: ACGS 16231 COR1942/989. Archives New Zealand, Department of Internal Affairs, Te Tari Taiwhenua.

THIS ROAD BLOCK WAS PART OF WELLINGTON FORTRESS AREA FOR THE DEFENCE OF WELLINGTON IN THE SECOND WORLD WAR.

Japan's victories in Asia and the Pacific had created a fear of invasion in New Zealand. Officially known as a type-E Road Block, and popularly known as a tank trap, it consisted of three substantial concrete pillars each 1.8 metres high, 1.5 metres wide and 3.7 metres long with grooves in the side. When invasion was imminent sections of railway iron were to be dropped into the grooves to slow down a Japanese advance on Wellington. Two of the concrete pillars were on each side of the road and the third was in the centre of the highway.

Apart from white reflectors, there were no effective warnings of the block. On the evening of 15 May 1942 Arthur Collin, a 22 year old medical student, was killed when his 1936 3½ horsepower BSA motorcycle hit the centre pillar. His sister Marie, who was riding pillion, was injured.

This road block, explosives placed under the main road near here, explosives under Beach Road, the two Pukerua Bay machine gun posts, and preparation for demolishing the highway bridge over the railway formed the first line of defence for Wellington.

This is the only road block of this type remaining on a main road in New Zealand.



Second World War road block north of Pukerua Bay. Photo: Ashley Blair.



Te Rūnanga o Toa Rangātira
www.ngatitua.iwi.nz

porirucity



Pukerua Bay Residents' Association



Site Record Form

NZAA SITE NUMBER: R26/284

SITE TYPE: Military (non-Maori)

SITE NAME(s):

DATE RECORDED:

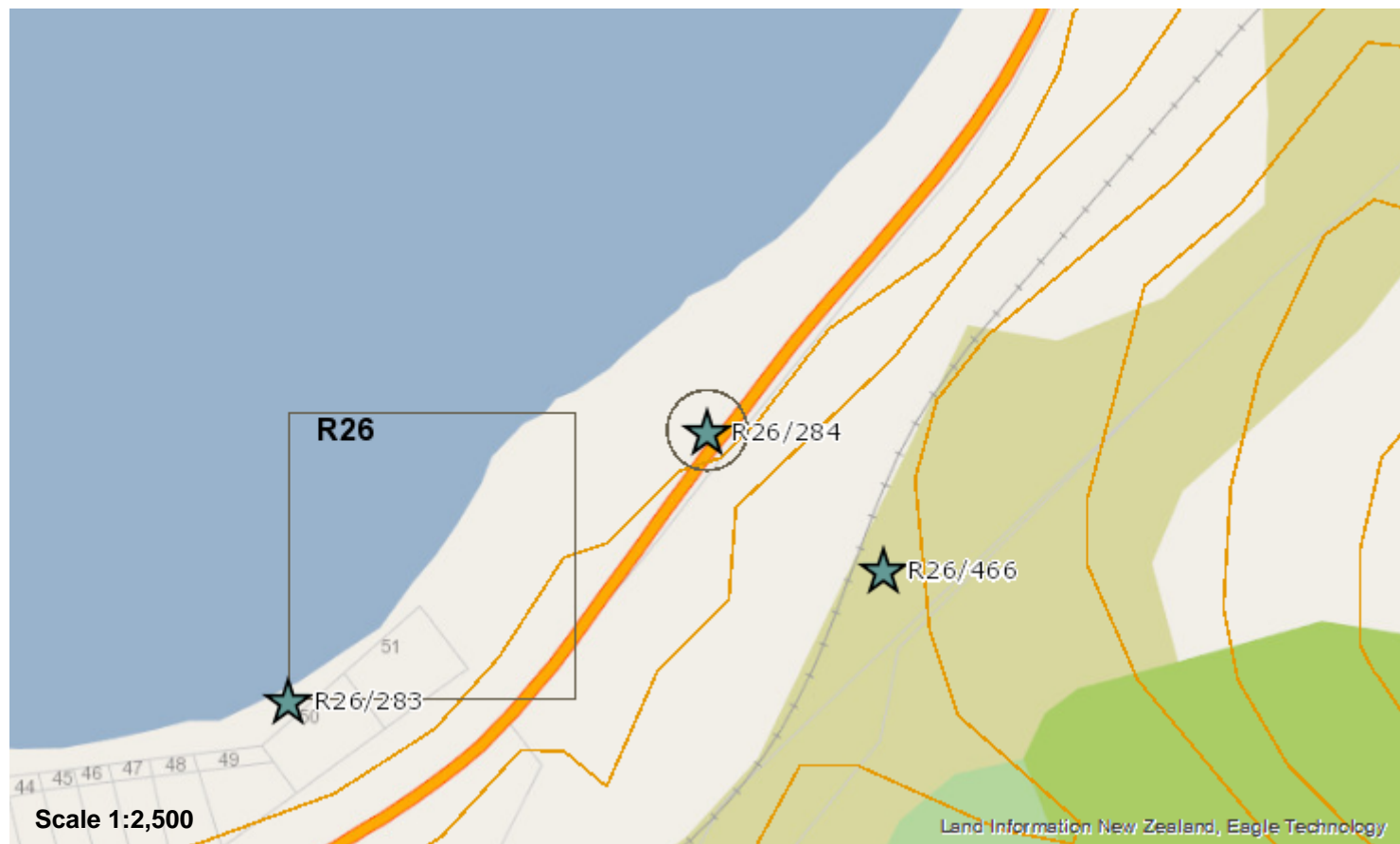
SITE COORDINATES (NZTM) Easting: 1759727

Northing: 5456380

Source: Handheld GPS

IMPERIAL SITE NUMBER:

METRIC SITE NUMBER: R26/284



Finding aids to the location of the site

East side of SH1, immediately north of prominent gut in hillside.

Brief description

Concrete World War II Road Block.

Recorded features

Other sites associated with this site

SITE RECORD HISTORY**NZAA SITE NUMBER:** R26/284**Site description****Condition of the site**

Highly visible in roadside bank/cliff. Remaining eastern portion is intact and structurally sound.

Statement of condition**Current land use:****Threats:**

SITE RECORD INVENTORY

NZAA SITE NUMBER: R26/284

Supporting documentation held in ArchSite

NEW ZEALAND ARCHAEOLOGICAL ASSOCIATION SITE RECORD FORM		NZAA METRIC SITE NUMBER R26/ 284
NZMS260 map number R26	DATE VISITED 16 May 1998	SITE TYPE WWII road block
NZMS260 map name Paraparaumu	SITE NAME: MAORI	OTHER
NZMS260 map edition 1st 1983		
Grid Reference Easting .2.6 6 9 7 . . Northing .6.0 1 8 0 .		
1. Aids to relocation of site (attach a sketch map)		
East side of SH1 at roadside. Cliffs immediately behind. Immediately north of prominent gut in hillside. Very visible.		
2. State of site and possible future damage		
Part that survives is good as concrete construction makes for a fairly durable feature. Presumably always at risk from road works.		
3. Description of site (Supply full details, history, local environment, references, sketches, etc. If extra sheets are attached, include a summary here)		
Road blocks were created at points on the road where natural obstacles either side of the road made by-passing the road block difficult. They consisted of two solid block of concrete, one on each side of a road, and each with a slot to hold a barrier. Only the block on the eastern side survives at this site. Generally date to c.1942.		
I recognised this only because of Owen Wilkes's Site Record Form (S14/202) describing one of these in Waikato.		
4. Owner Address	Road Reserve	Tenant/Manager Address
5. Nature of information (hearsay, brief or extended visit, etc.) Seen in passing at 70 kpm		
Photographs (reference numbers and where they are held) No		
Aerial photographs (reference numbers and clarity of site)		
6. Reported by A. Walton	Filekeeper <i>AWK</i>	Date
Address DoC, P.O. Box 10420		20 May 1998
WELLINGTON		
7. Department of Conservation (for office use)		
<u>FIH</u> Type of site	<u>YY</u>	<u>AIAI</u> Present condition & future danger of destruction
<u>1-1-1</u> Local environment today	<u>PISI</u>	Local body Porirua
<u>1-1-1</u> Land classification		





Pukerua Bay

5-7 Wairaka Road
Pukerua Bay 5026

12th November 2020

PUKERUA BAY RSA SUBMISSION IN SUPPORT OF THE TE HARA PUKERUA HERITAGE GROUP

Pukerua Bay RSA supports the He Ara Pukerua Heritage Group in their submission for the Pukerua Bay World War 2 “Road Block Tank Trap” to be included in the “Historic Heritage Items (Group B)” and identified on the Porirua City Council’s District Plan maps.

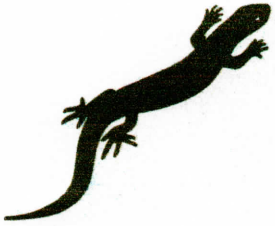
Any military artefacts or history recognising the efforts of Service personnel in safeguarding our country needs to be properly documented and retained for future generations to view.

Our heritage is important for those generations that follow, otherwise it will be lost for ever.

Pukerua Bay RSA has been very impressed by the accurate, detailed work of the “He Ara Pukerua Heritage Group” and it’s quality of presentation.

A handwritten signature in black ink, appearing to read 'John Pearce', with a flourish at the end.

John Pearce
President
Pukerua Bay RSA



Pukerua Bay Residents' Association

www.pukeruabay.org.nz

chair@pukeruabay.org.nz

PCC - Submission Number - 6

PUKERUA BAY RESIDENTS' SUBMISSION IN SUPPORT OF THE HE ARA PUKERUA HERITAGE GROUP

Pukerua Bay Residents' Association supports the He Ara Pukerua Heritage Group in their submission for the Pukerua Bay WW II "Road Block Tank Trap" to be included in the "Historic Heritage Items (Group B)" and identified on the Porirua City Council's District Plan maps.

There are few examples remaining of activities undertaken to safeguard our country in times of conflict. What remains needs to be properly documented and retained for future generations to view.

Our heritage is important for those generations that follow, otherwise it will be lost for ever.

Pukerua Bay Residents' Association very much appreciates the accurate and detailed work undertaken by the "He Ara Pukerua Heritage Group" and its quality of its presentation.

A handwritten signature in blue ink, appearing to read "Paul FitzGerald".

Paul FitzGerald
Chair
Pukerua Bay Residents' Association